

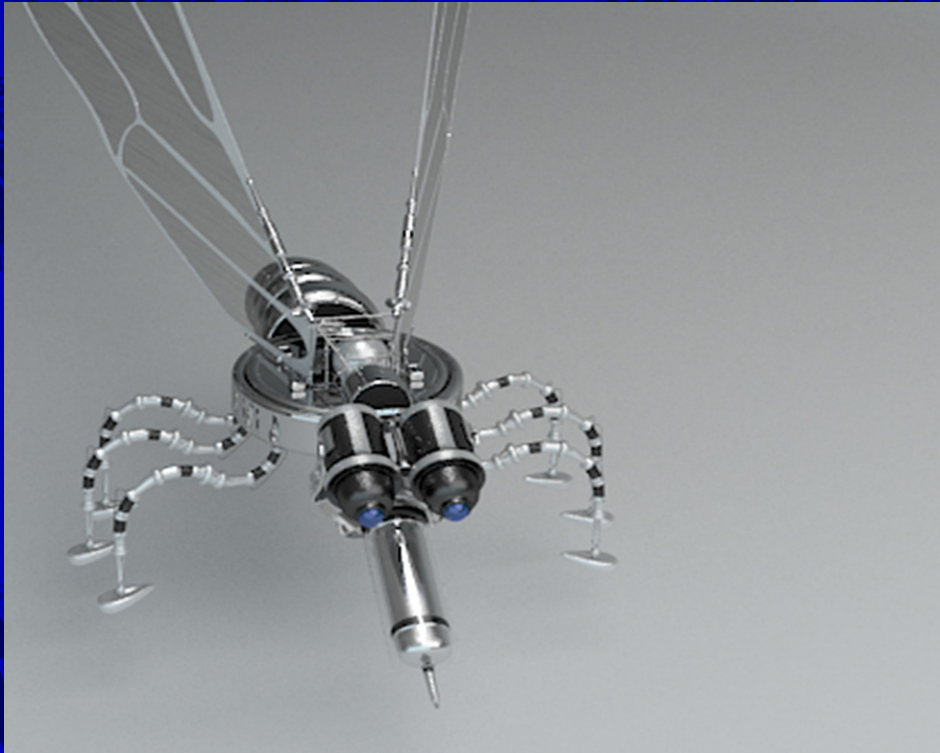


KSSR E-HEALTH NANO ROBOT

DESIGN FICTION

Team

Rebecca Kain
Kayla Snyder
Hossain Samar Qorbani
Shariq Khan



ABOUT

1

KSSR 4.0 is based on the crude autonomous nano quadrotor technologies developed in the early 2000s.

2

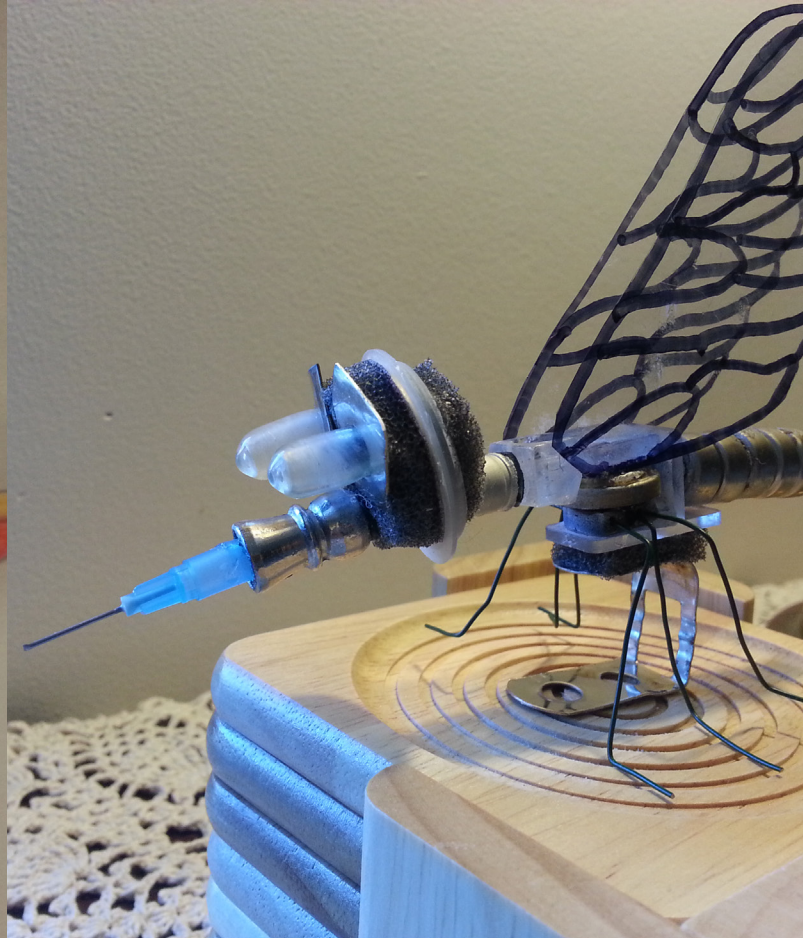
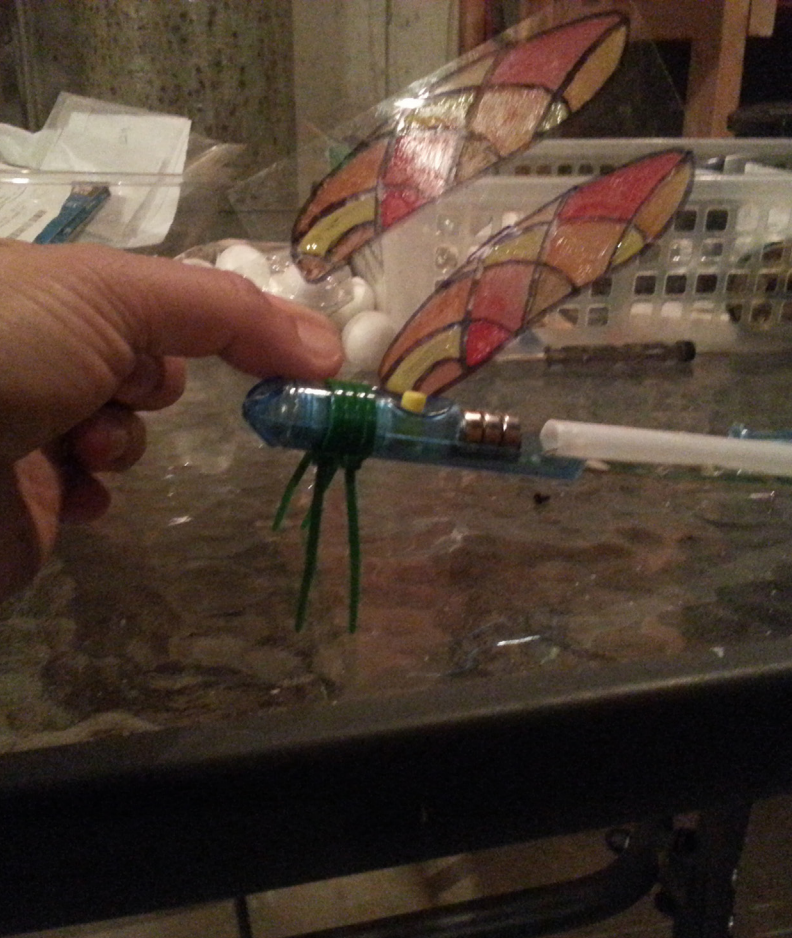
The newest iteration of KSSR 4.0 bots use heat sensing object recognition technologies, in tandem with existing PanAmerican DNA mapping tools to target patients.

3

KSSR 4.0 exploits the government's existing mapping of the spread of the CZ-114 virus through the so-called GenMod nourishment program to send required numbers of KSSR 4.0 bots to affected areas.

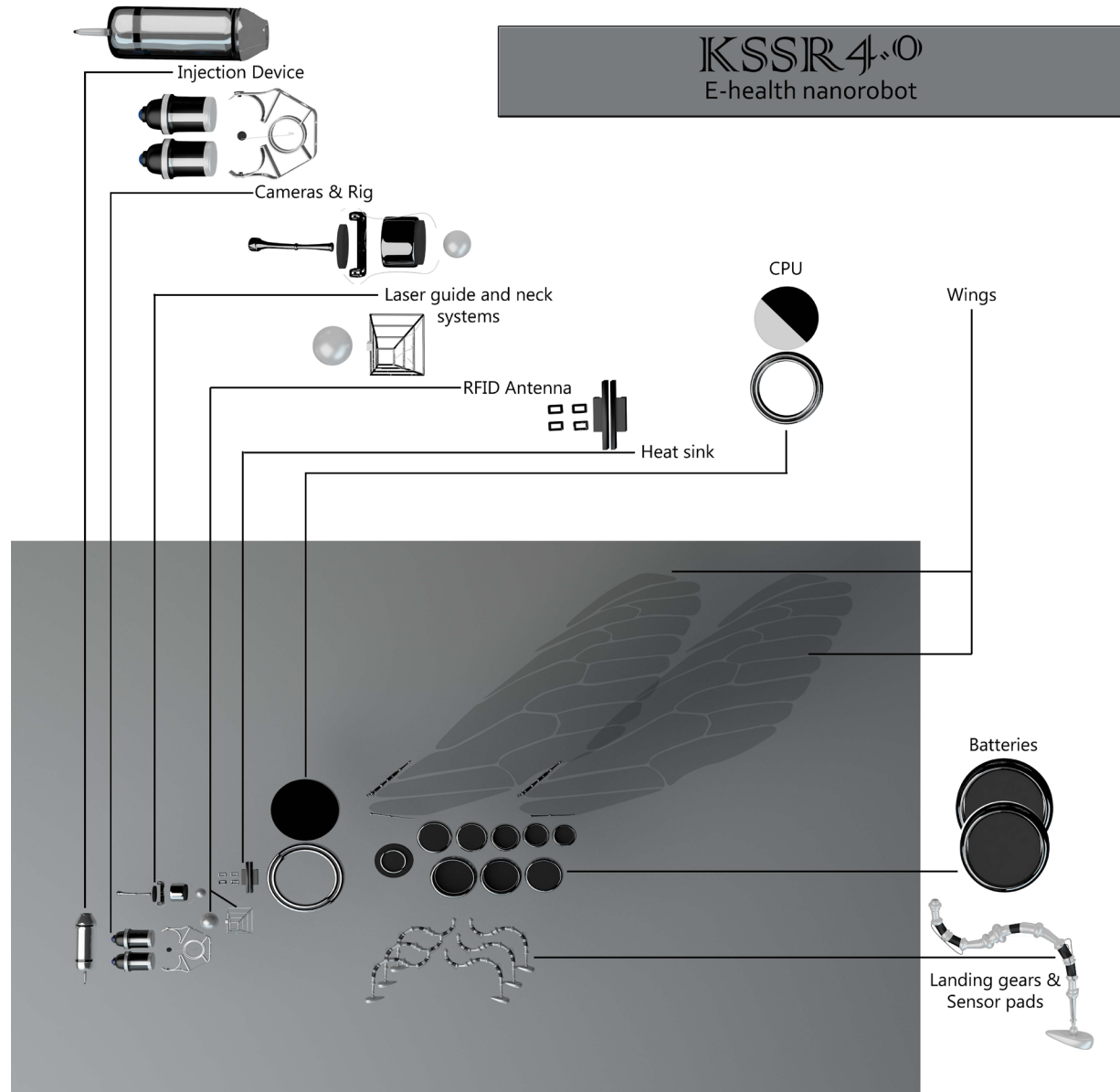
4

Once a KSSR 4.0 has positively identified a patient, it scans the subject in order to find the easiest and most effective access point to the human neck.

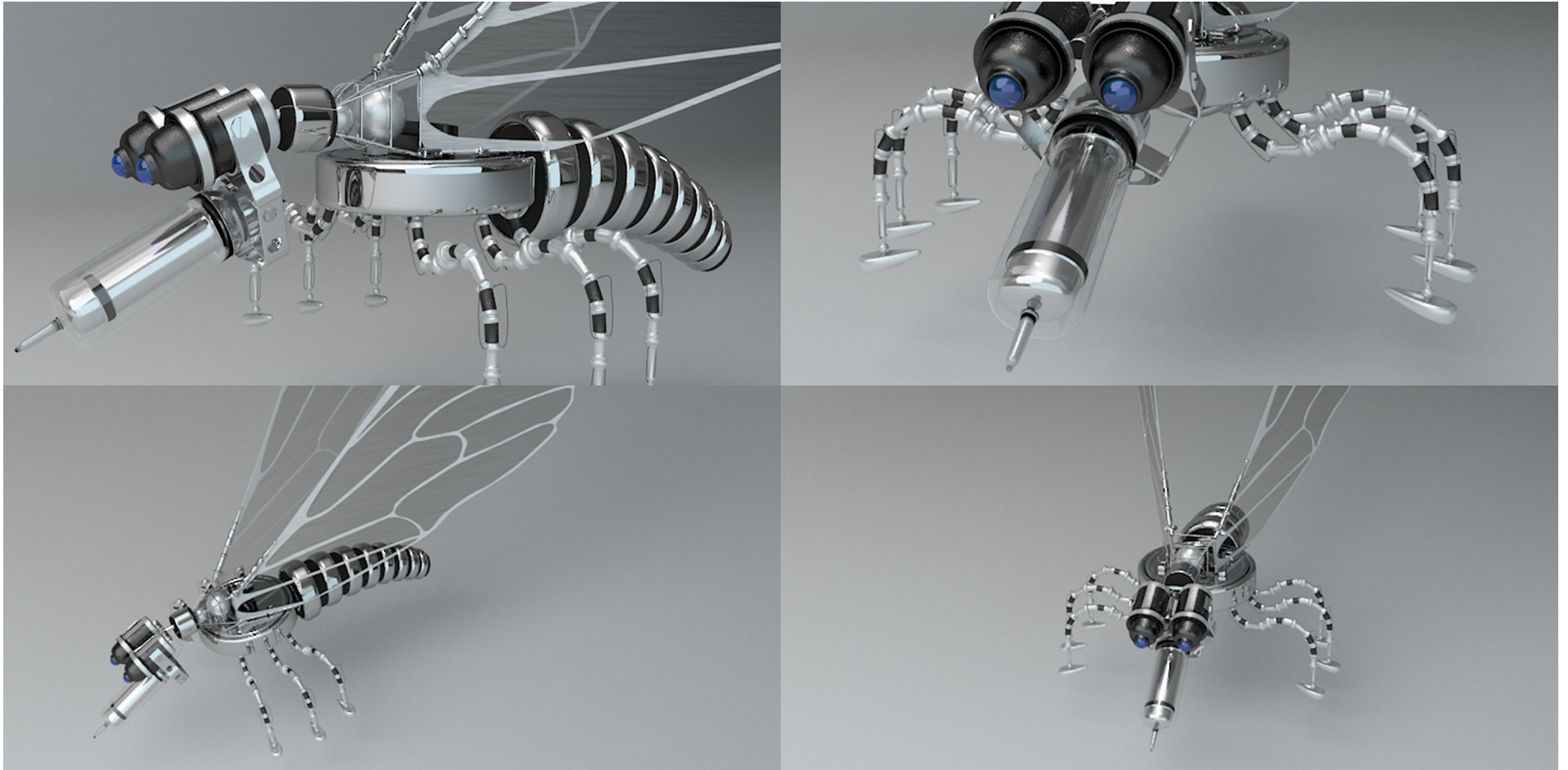


PROCESS

Steampunk Prototyping



TEARDOWN - 3D



FINAL RENDER

KSSR 4.0 E-health Nanorobot



PROJECT VIDEO

<https://youtu.be/TEWowwUNwLs>